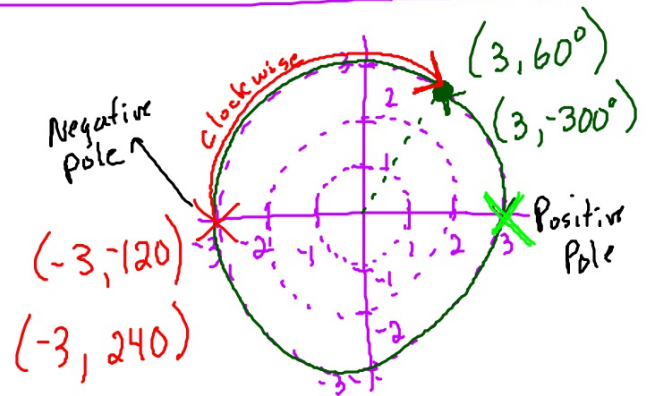


# POLAR COORDINATES

PLOT THE COORDINATE AND GIVE  
3 OTHER POLAR REPRESENTATIONS

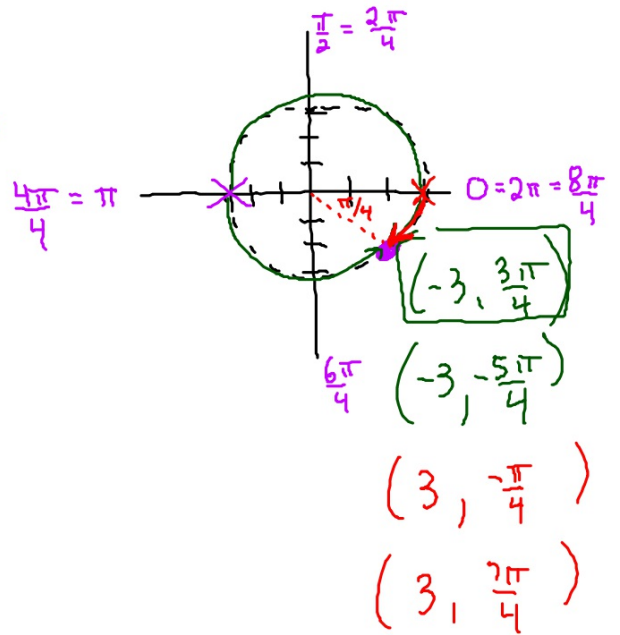
$(3, 60^\circ)$

which circle  
which side of circle  
 $(r, \theta)$



(2)  $(-3, \frac{3\pi}{4})$

↶ counterclockwise



(3)

$(5, \frac{7\pi}{10})$

↪ counter

