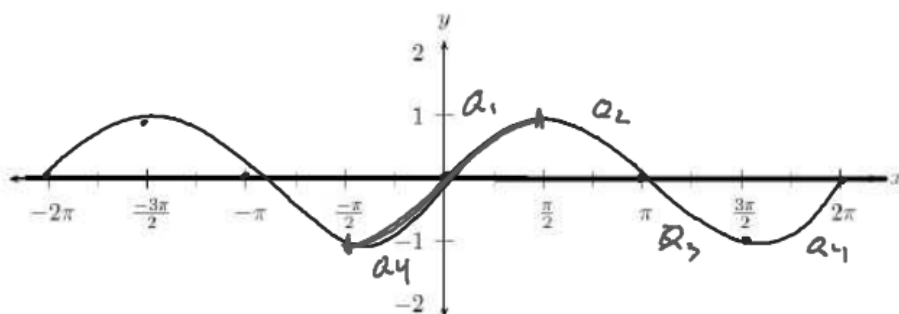


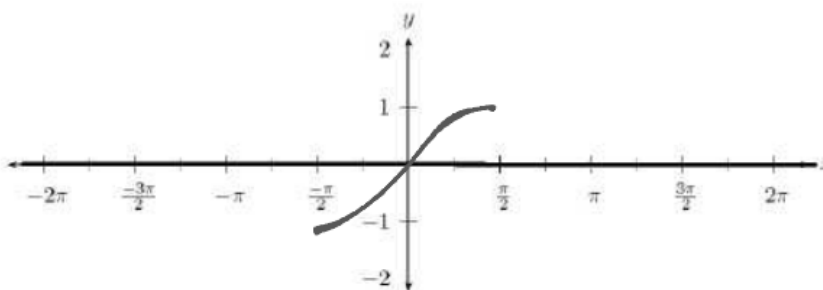
What you'll Learn About

- Inverse Trigonometric Functions and their Graphs

The graph of  $y = \sin x$



The graph of  $y = \sin^{-1} x = \arcsin x$



$\sin^{-1}$   
Inverse Sin  
arcsin ↗

The Unit Circle and Inverse Functions

$$\sin^{-1} \frac{1}{2} = 30^\circ$$

$$\sin^{-1} \left( -\frac{\sqrt{2}}{2} \right) = -45^\circ$$

