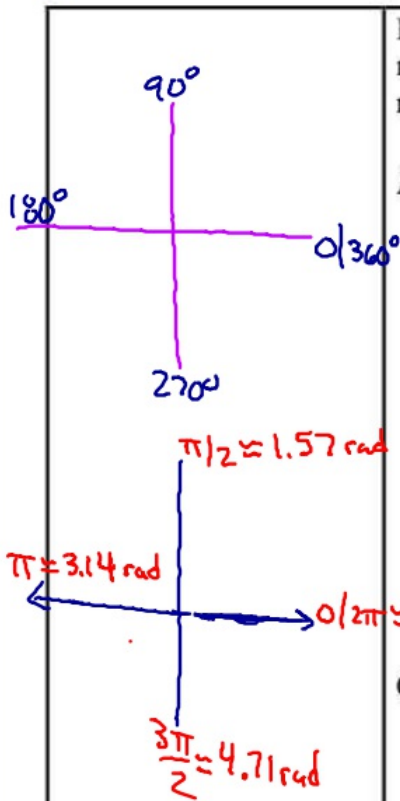


$\tan$  → opposite side and the adjacent = 1

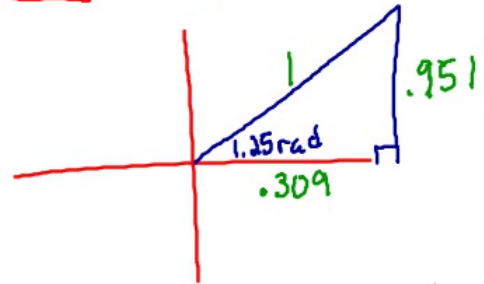


Evaluate using a calculator. Make sure your calculator is in the correct mode. Give answers to 3 decimal places and then draw the triangle that represents the situation.

A)  $\sin 53^\circ$

B)  $\cos \frac{2\pi}{5} = .309$  adj

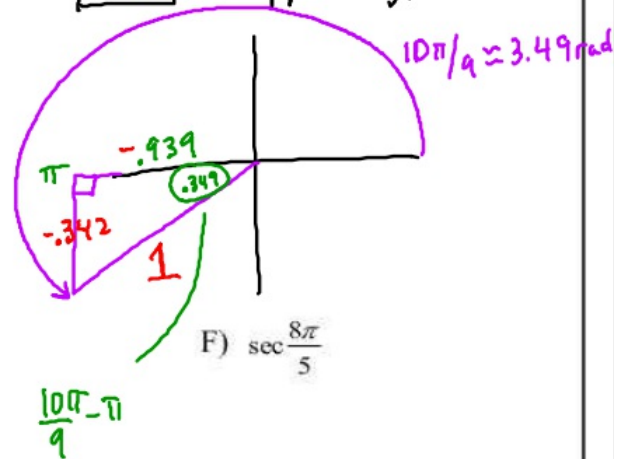
$\cos$  → adj → Hyp = 1



C)  $\tan 154^\circ$

D)  $\sin\left(\frac{10\pi}{9}\right) = .342$

$\sin$  → opp → hyp = 1



E)  $\csc 220^\circ$

F)  $\sec \frac{8\pi}{5}$